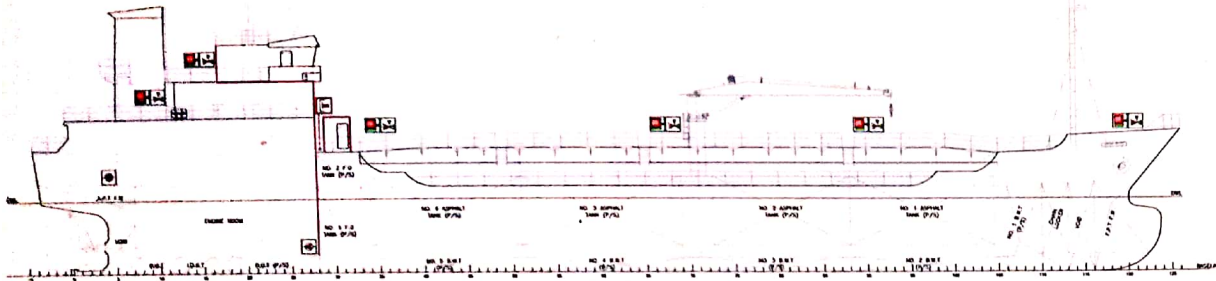
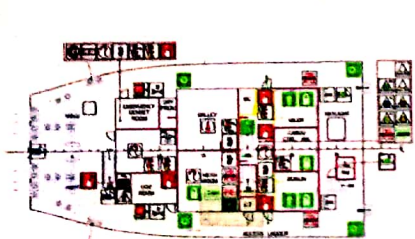


FIRE CONTROL & SAFETY PLAN PELAN KAWALAN KEBAKARAN & KESELAMATAN "LG ASPHALT 1"



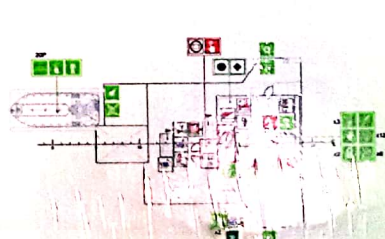
OUTBOARD PROFILE
BAHAGIAN LUAR KAPAL



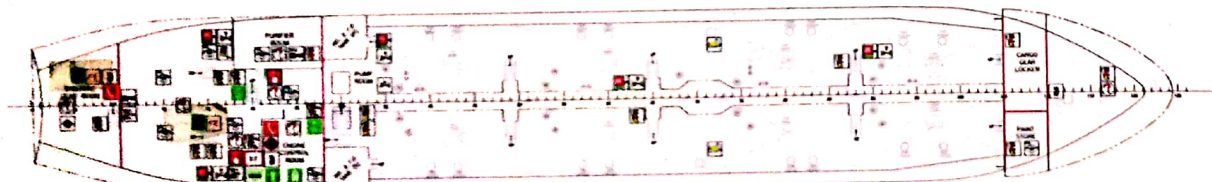
POOP DECK
GELADAK KEDUA



BOAT DECK
GELADAK BOT



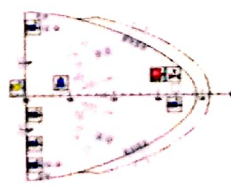
NAV. BRIDGE DECK
GELADAK ANJUNGAN PELAYARAN



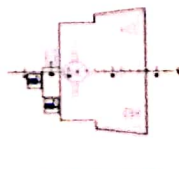
UPPER DECK
GELADAK ATAS



UNDER UPPER DECK
GELADAK BAWAH ATAS



FORECASTLE DECK
GELADAK KEMOT



COMPASS DECK
GELADAK KOMPAS

SYMBOL MELAKUKAN	LIFE SAVING APPLIANCES PERKAKAS MENYELAMAT NYAWA				REMARKS CATATAN	SYMBOL MELAKUKAN	FIRE FIGHTING EQUIPMENT PERALATAN MELAWAN KEBAKARAN				REMARKS CATATAN
	DESCRIPTION KETERANGAN	LOCATION LOKASI					DESCRIPTION KETERANGAN	LOCATION LOKASI			
		DECK	NO.	QUANTITY				DECK	NO.	QUANTITY	
1	LIFELINE (10 MEN) (10 ORANG)	1	1	1	1	CO2 FIRE EXTINGUISHER (5 KG)	1	1	1	1	1
2	LIFELINE WITH DART (10 MEN)	1	1	1	1	FOAM WHEELED FIRE EXTINGUISHER (45L)	1	1	1	1	1
3	FIRE LAUNCHED LIFELINE (20 PERSON)	1	1	1	1	PORTABLE FOAM APPLICATOR	1	1	1	1	1
4	WHEEL BOAT	1	1	1	1	FIRE HYDRANT WATER	1	1	1	1	1
5	LIFELINE	1	1	1	1	HOSE WITH SPRAY JET NOZZLE	1	1	1	1	1
6	LIFELINE WITH LINE	1	1	1	1	INTERNATIONAL SHOCK CONNECTION	1	1	1	1	1
7	LIFELINE WITH LIGHT & SOUND SIGNAL	1	1	1	1	EMERGENCY FIRE PUMP	1	1	1	1	1
8	WHEEL BOAT	1	1	1	1	FIRE AT G5 PUMP	1	1	1	1	1
9	WHEEL BOAT	1	1	1	1	WHEEL & BALLAST PUMP	1	1	1	1	1
10	WHEEL BOAT	1	1	1	1	CO2 BOTTLE	1	1	1	1	1
11	WHEEL BOAT	1	1	1	1	SPACE PROTECTED BY CO2	1	1	1	1	1
12	WHEEL BOAT	1	1	1	1	EMERGENCY GENERATOR	1	1	1	1	1
13	WHEEL BOAT	1	1	1	1	EMERGENCY BATTERY	1	1	1	1	1
14	WHEEL BOAT	1	1	1	1	EMERGENCY CONTROL FUEL OIL VALVES	1	1	1	1	1
15	WHEEL BOAT	1	1	1	1	EMERGENCY CONTROL FUEL OIL VALVES	1	1	1	1	1
16	WHEEL BOAT	1	1	1	1	EMERGENCY CONTROL FUEL OIL VALVES	1	1	1	1	1
17	WHEEL BOAT	1	1	1	1	EMERGENCY CONTROL FUEL OIL VALVES	1	1	1	1	1
18	WHEEL BOAT	1	1	1	1	EMERGENCY CONTROL FUEL OIL VALVES	1	1	1	1	1
19	WHEEL BOAT	1	1	1	1	EMERGENCY CONTROL FUEL OIL VALVES	1	1	1	1	1
20	WHEEL BOAT	1	1	1	1	EMERGENCY CONTROL FUEL OIL VALVES	1	1	1	1	1
21	WHEEL BOAT	1	1	1	1	EMERGENCY CONTROL FUEL OIL VALVES	1	1	1	1	1
22	WHEEL BOAT	1	1	1	1	EMERGENCY CONTROL FUEL OIL VALVES	1	1	1	1	1
23	WHEEL BOAT	1	1	1	1	EMERGENCY CONTROL FUEL OIL VALVES	1	1	1	1	1
24	WHEEL BOAT	1	1	1	1	EMERGENCY CONTROL FUEL OIL VALVES	1	1	1	1	1
25	WHEEL BOAT	1	1	1	1	EMERGENCY CONTROL FUEL OIL VALVES	1	1	1	1	1
26	WHEEL BOAT	1	1	1	1	EMERGENCY CONTROL FUEL OIL VALVES	1	1	1	1	1
27	WHEEL BOAT	1	1	1	1	EMERGENCY CONTROL FUEL OIL VALVES	1	1	1	1	1
28	WHEEL BOAT	1	1	1	1	EMERGENCY CONTROL FUEL OIL VALVES	1	1	1	1	1
29	WHEEL BOAT	1	1	1	1	EMERGENCY CONTROL FUEL OIL VALVES	1	1	1	1	1
30	WHEEL BOAT	1	1	1	1	EMERGENCY CONTROL FUEL OIL VALVES	1	1	1	1	1
31	WHEEL BOAT	1	1	1	1	EMERGENCY CONTROL FUEL OIL VALVES	1	1	1	1	1
32	WHEEL BOAT	1	1	1	1	EMERGENCY CONTROL FUEL OIL VALVES	1	1	1	1	1
33	WHEEL BOAT	1	1	1	1	EMERGENCY CONTROL FUEL OIL VALVES	1	1	1	1	1
34	WHEEL BOAT	1	1	1	1	EMERGENCY CONTROL FUEL OIL VALVES	1	1	1	1	1
35	WHEEL BOAT	1	1	1	1	EMERGENCY CONTROL FUEL OIL VALVES	1	1	1	1	1
36	WHEEL BOAT	1	1	1	1	EMERGENCY CONTROL FUEL OIL VALVES	1	1	1	1	1
37	WHEEL BOAT	1	1	1	1	EMERGENCY CONTROL FUEL OIL VALVES	1	1	1	1	1
38	WHEEL BOAT	1	1	1	1	EMERGENCY CONTROL FUEL OIL VALVES	1	1	1	1	1
39	WHEEL BOAT	1	1	1	1	EMERGENCY CONTROL FUEL OIL VALVES	1	1	1	1	1
40	WHEEL BOAT	1	1	1	1	EMERGENCY CONTROL FUEL OIL VALVES	1	1	1	1	1
41	WHEEL BOAT	1	1	1	1	EMERGENCY CONTROL FUEL OIL VALVES	1	1	1	1	1
42	WHEEL BOAT	1	1	1	1	EMERGENCY CONTROL FUEL OIL VALVES	1	1	1	1	1
43	WHEEL BOAT	1	1	1	1	EMERGENCY CONTROL FUEL OIL VALVES	1	1	1	1	1
44	WHEEL BOAT	1	1	1	1	EMERGENCY CONTROL FUEL OIL VALVES	1	1	1	1	1
45	WHEEL BOAT	1	1	1	1	EMERGENCY CONTROL FUEL OIL VALVES	1	1	1	1	1
46	WHEEL BOAT	1	1	1	1	EMERGENCY CONTROL FUEL OIL VALVES	1	1	1	1	1
47	WHEEL BOAT	1	1	1	1	EMERGENCY CONTROL FUEL OIL VALVES	1	1	1	1	1
48	WHEEL BOAT	1	1	1	1	EMERGENCY CONTROL FUEL OIL VALVES	1	1	1	1	1
49	WHEEL BOAT	1	1	1	1	EMERGENCY CONTROL FUEL OIL VALVES	1	1	1	1	1
50	WHEEL BOAT	1	1	1	1	EMERGENCY CONTROL FUEL OIL VALVES	1	1	1	1	1

PORT REGISTRY : PORT KELANG
 GROSS TONNAGE : 1642
 CALL SIGN : 98026
 MMSI NUMBER : 533138855
 IMO NUMBER : 9548900
 COMPLEMENT : 14 PERSONS

PRINCIPAL PARTICULARS
 LENGTH O.A. : 78.34 M
 BREADTH MLD : 12.80 M
 DEPTH MLD : 6.90 M

- NOTE:
 1. FIREMEN OUTLET CONNECTION
 2. SELF COMPRESSED BREATHING APPARATUS
 3. FIRE ALARM
 4. FIRE ALARM
 5. FIRE ALARM
 6. FIRE ALARM
 7. FIRE ALARM
 8. FIRE ALARM
 9. FIRE ALARM
 10. FIRE ALARM
 11. FIRE ALARM
 12. FIRE ALARM
 13. FIRE ALARM
 14. FIRE ALARM
 15. FIRE ALARM
 16. FIRE ALARM
 17. FIRE ALARM
 18. FIRE ALARM
 19. FIRE ALARM
 20. FIRE ALARM
 21. FIRE ALARM
 22. FIRE ALARM
 23. FIRE ALARM
 24. FIRE ALARM
 25. FIRE ALARM
 26. FIRE ALARM
 27. FIRE ALARM
 28. FIRE ALARM
 29. FIRE ALARM
 30. FIRE ALARM
 31. FIRE ALARM
 32. FIRE ALARM
 33. FIRE ALARM
 34. FIRE ALARM
 35. FIRE ALARM
 36. FIRE ALARM
 37. FIRE ALARM
 38. FIRE ALARM
 39. FIRE ALARM
 40. FIRE ALARM
 41. FIRE ALARM
 42. FIRE ALARM
 43. FIRE ALARM
 44. FIRE ALARM
 45. FIRE ALARM
 46. FIRE ALARM
 47. FIRE ALARM
 48. FIRE ALARM
 49. FIRE ALARM
 50. FIRE ALARM

TERjemahan dan
 (TRANSLATION APPROVED)
 14/03/2015

LG ASPHALT 1
 78M ASPHALT/BITUMEN TANKER
 FIRE CONTROL & SAFETY PLAN

NO.	REVISION	DATE	BY	APPROVED BY
01	ISSUE	14/03/2015